

DR.  
ONOWA

MCIVOR

ASSOCIATE PROFESSOR,  
INDIGENOUS EDUCATION

PROJECT DIRECTOR,  
NEȚOLNEW  
[SSHRC RESEARCH GRANT]

UNIVERSITY OF VICTORIA  
WSÁNEĆ AND LEKWUNGEN  
TERRITORIES

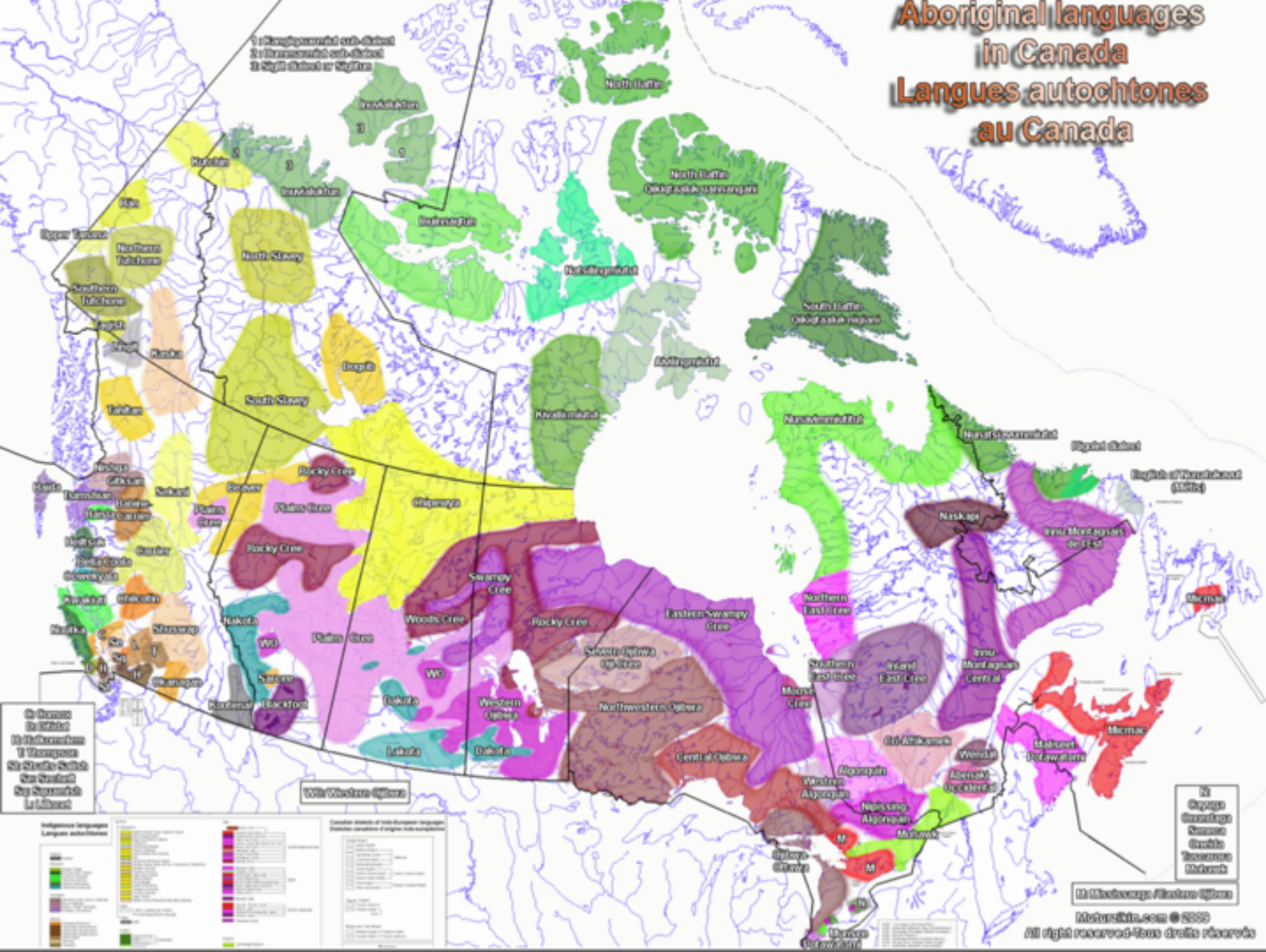


*ONE mind • ONE people*

NEȚOLNEW 'One mind, one people': A national  
partnership to understand and enhance  
Indigenous adults' contributions to  
reviving Indigenous languages  
Stabilizing Indigenous Languages Symposium (SILS) 2018



**Aboriginal languages  
in Canada  
Langues autochtones  
au Canada**





# INDIGENOUS LANGUAGE ERAS

SINCE TIME  
IMMEMORIAL

Commonplace  
Indigenous  
multilingualism

EARLY  
CONTACT

Continued  
Indigenous  
multilingualism

COLONIAL  
CREATION  
POLICY ERA

Indigenous  
language  
demise

CURRENT  
STATE

Indigenous  
languages  
in various states  
of recovery

# Then, and now...

Indigenous language proficiency is higher (44.9%) among those living in reserve communities compared with those living off reserve (13.4%).

Yet more majority Indigenous people live in urban areas of 30,000 or more.

This tells us two things. 1) - Ind comms are 'hot spots' for lang use and learning and 2) language support is needed everywhere in Canada, not only in on-reserve communities.

# Why focus on adults?

- My lang work journey shifted from ECD to Adults
- Why adults? workers powerhouses parents young grandparents teachers curr dev
- NEEDED an ARMY of new speakers to get the job done. Too much resp for our children alone and besides who will teach them, get them and keep them talking?

That is the reason for our focus on Adult learners, but ULTIMATE goal is returning to whole lang use.

Lang @ home. Intergenerational lang use. So that needs to be a focus not far from our gaze.

# OUR PARTNERS

ONE mind · ONE people  
**NETOLNEW**





## Adult Indigenous Language Learning

NILLA (NETOLNEW Indigenous Language Learning Atlas)

### Sites of Learning & Teaching

- Mentor-Apprentice
- Adult Immersion
- Language House
- Exceptional Learners

### Assessment Tool

### Sites of Contribution

- Language Nest
- K-12 Immersion
- Family-based Immersion
- Bilingual School

Links between Language and Health & Well-Being



# WSÁNEĆ SCHOOL BOARD



Adapting tools and methods for SENĆOŦEN





# TSI TYÓNÑHEHT ONKWAWÉN:NA



Using oral language resources in language learning



# DEHCHO FIRST NATIONS



**DEHCHO  
FIRST NATIONS**

Elders' gathering for language  
revitalization and maintenance





# NILLA

NETOLNEW INDIGNEOUS  
LANGUAGE LEARNING  
ATLAS

## Vision

- 1) build a network of Indigenous communities to learn about and from each other's successes in proficiency building and achievement of new speakers, and;
- 2) educate the rest of Canada and the world about Ind language communities' successes in the creation of new speakers and speaking communities.

# NILLA

## NETOLNEW INDIGNEOUS LANGUAGE LEARNING ATLAS

The primary purpose create a resource that is useful to Indigenous language communities aiming to reclaim, revive and continue their languages.

A secondary aim of educating the public and raising the profile of the value, worth and beauty of Indigenous languages.

The project will be primarily an open public portal for communities to network, and for Canada and the world to learn more about what is going on with Indigenous language proficiency building work.

The Atlas will be a tool for communities that want to connect on a voluntary basis and share information either publicly or in a password protected portal only with other Indigenous communities who have agreed to the same.



# NILLA

## NETOLNEW INDIGENOUS LANGUAGE LEARNING ATLAS

---

First Nations, Inuit, and Métis communities across Canada are doing amazing work and experiencing successes in revitalizing and maintaining their languages.

NILLA will create an online sharing portal and virtual gathering place for Indigenous language communities, organizations, learners, and leaders to gather to share initiatives, reciprocally support, access and share resources, and learn from one another's successes.

The NILLA project will also serve an important educational purpose as a place where these efforts can be shared to inspire and inform others across Canada and internationally.

Indigenous communities and organizations across Canada involved in language revitalization efforts are encouraged to consider contributing to this groundbreaking project.

**See [www.netolnew.ca/nilla](http://www.netolnew.ca/nilla) to learn more &  
complete our survey**

# NILLA

NETOLNEW INDIGNEOUS  
LANGUAGE LEARNING  
ATLAS

Please visit  
[www.netolnew.ca/nilla](http://www.netolnew.ca/nilla)  
to learn more and complete  
our survey



# NEȚOLNEW

A COMMUNITY-UNIVERSITY  
RESEARCH PARTNERSHIP

Indigenous led, Indigenous focused and  
Indigenous governed

## COMMUNITY PARTNERS



**FIRST PEOPLES'**  
CULTURAL COUNCIL



**WSÁNEĆ**  
SCHOOL BOARD



**DEHCHO**  
**FIRST NATIONS**



**KENJGEWIN TEG**



UNIVERSITY  
nuhelot'jine thaiyots'i nistameyimākanak  
**BLUE QUILLS**

This research was supported by the  
Social Sciences and Humanities  
Research Council of Canada



Social Sciences and  
Humanities Research  
Council of Canada

Conseil de recherches  
en sciences humaines  
du Canada

**Canada**

Project hub located at



**University  
of Victoria**

Collaborators and research assistants from Education, Indigenous Education,  
Applied & Theoretical Linguistics, and Community-based researchers





HÍSWKE

čuu

gilakas'la

kinanâskomitinân

nitsíniyi'taki

(thank you)

for your interest and attention

